

Artecy

CROSS STITCH

Mini Lago di Braies, Italy



* Original image© Samuele Errico Piccarini - Unsplash
Cross Stitch Design by Tereena Clarke.

Completed Size = 200w x 141h Stitches

14 Count, 14.5w x 10h inches (37cm x 25.5cm)

16 Count, 12.5w x 9h inches (32cm x 23cm)

18 Count, 11.5w x 8h inches (29cm x 20cm)

Uses 82 DMC cotton colours. Only full cross stitches are used in this pattern.

Pattern Instructions

* This pattern can be worked on any fabric type, colour or count you prefer. To work out the size of the finished article, take the number of stitches wide and high and divide it by the count of your fabric (e.g. 14,16,18 count aida etc) to get the size in inches. Times it by 2.54 to get centimetres. We have the sizes in inches shown on the previous page. Also leave at least a few inches of fabric around each side of the design to assist in framing. The higher the fabric count the smaller the completed project will be.

* To put the pattern together look in the top and bottom corners. The page numbers in brackets show which page number it joins up to. Page 1 always starts at the top left hand side of the pattern. Our pages also have a shaded grey section. This indicates a 3 row overlap from adjoining pages to assist with reading the pattern. PLEASE DO NOT RESTITCH THIS AREA.

* You should begin at the centre of the pattern. To find the centre of the pattern it is just a matter of laying the pattern out and locating the arrows at the top and left hand side of the patterns, they are determined by dividing the stitch numbers wide and high in half. Where the two points meet in the middle, that is the centre.

* If you need more assistance to find the middle of your pattern or the page layout, please see the notes section on the colour symbol chart. The easiest way to stitch this pattern, as it has multiple pages, is to stitch one page at a time.

* We suggest using two strands of floss for each stitch and one strand for backstitching if the pattern calls for it.

We hope you enjoy stitching our pattern.

Thanks and Best Wishes
Tereena Clarke

Artecy Cross Stitch
Po Box 3474
Tuggerah, NSW 2259
Australia

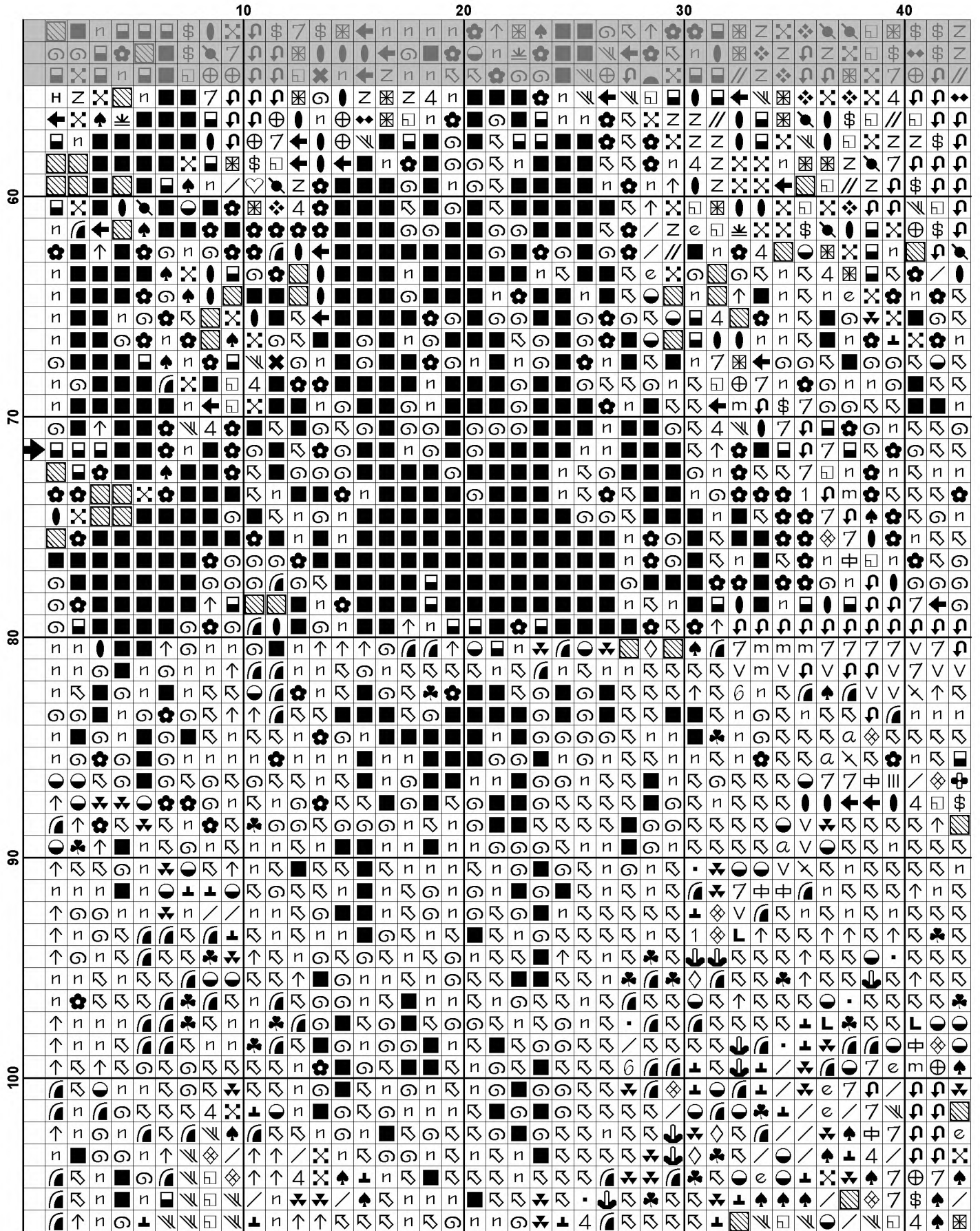
Websites: www.artecy.com and www.artecyshop.com
Email: artecy@artecy.com or stitch@artecyshop.com

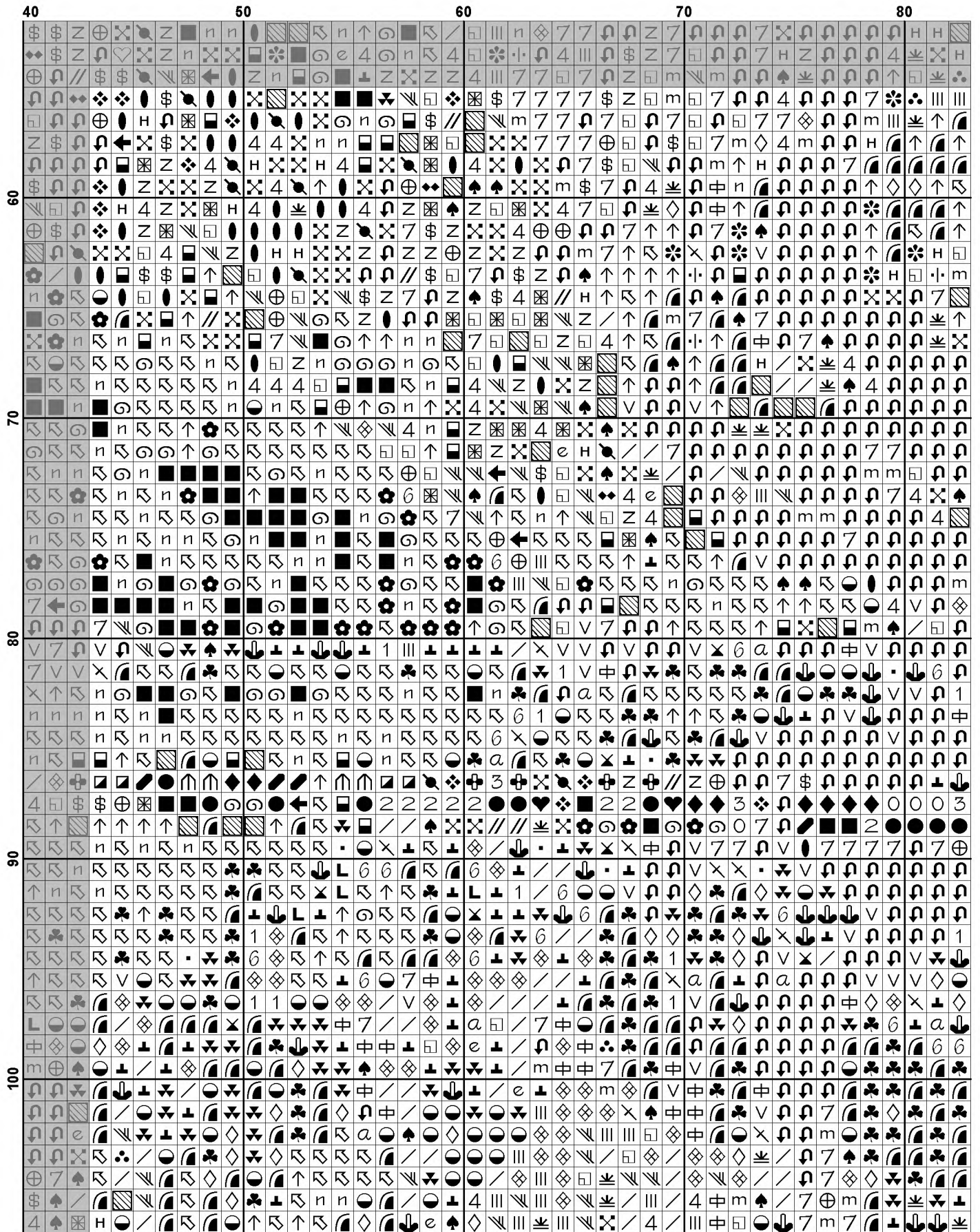
*Patterns are strictly for personal use only. It is against our copyright to make kits for sale from our designs or to sell, copy or redistribute this pattern in any form. You may not upload our patterns to any internet forums or groups or any other website. You may make 1 copy of this pattern for a working copy for your own personal use if needed.

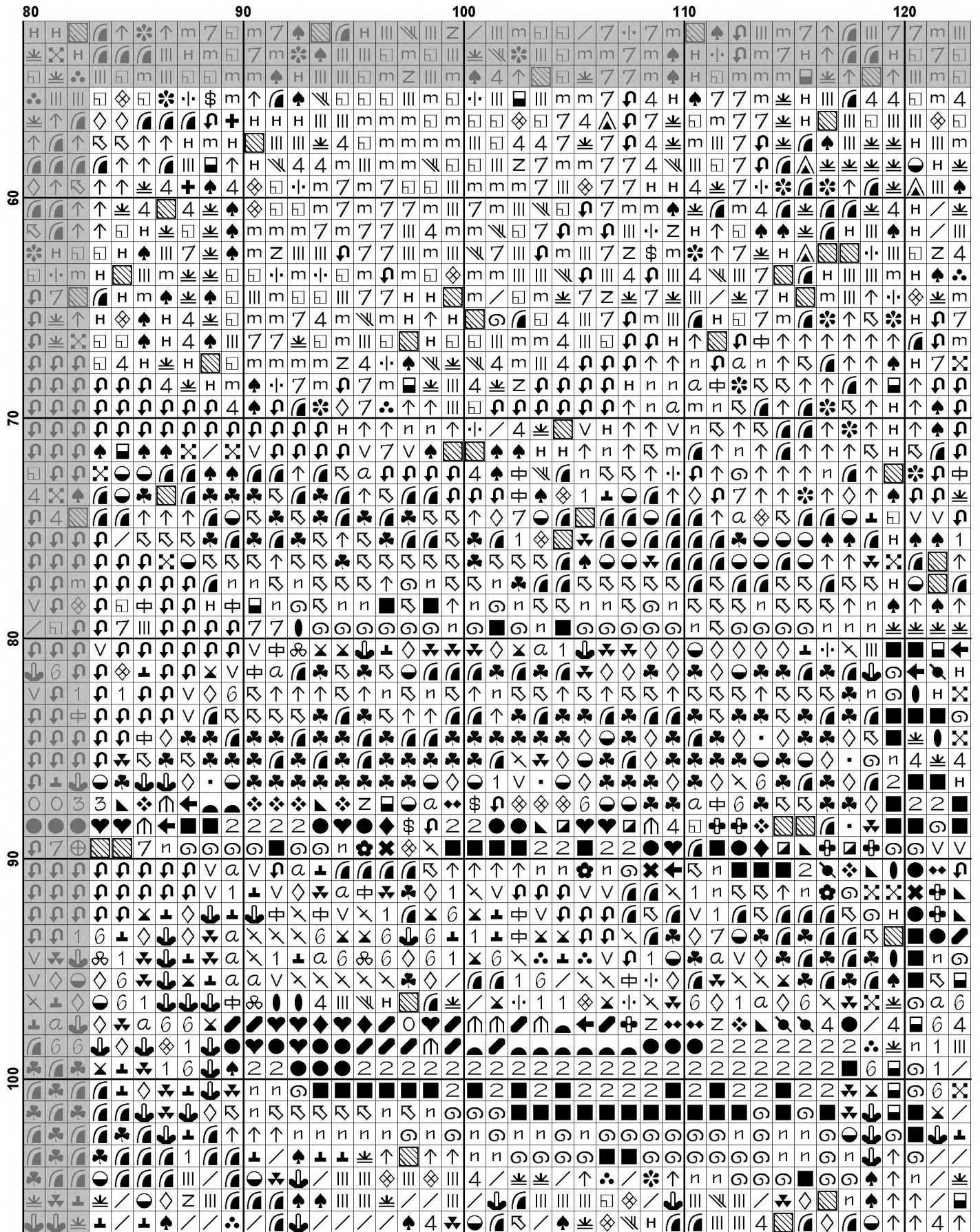
80 90 100 110 120

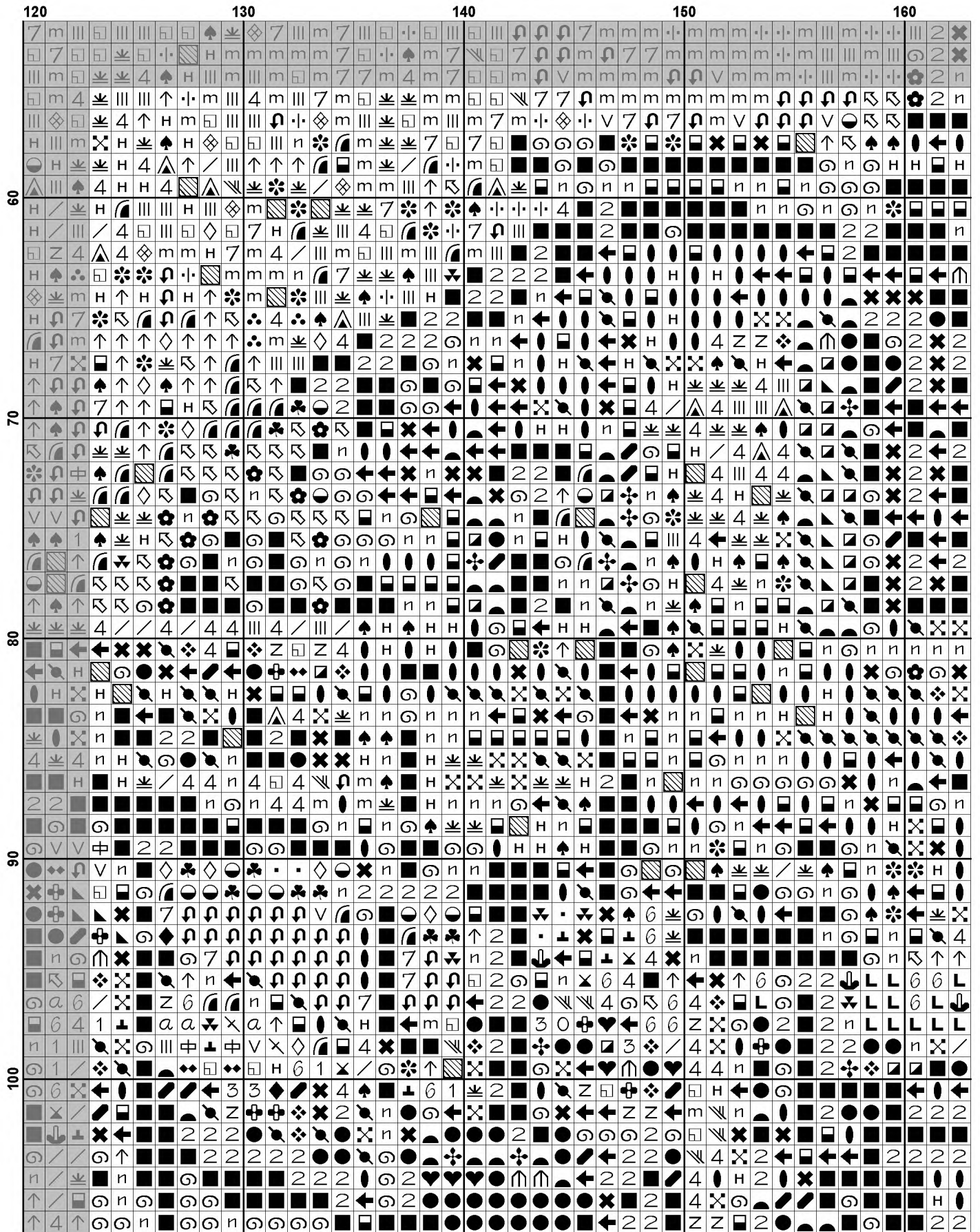
This image displays a complex grid of cross-stitch symbols arranged in a 10x20 grid. The grid is organized into four horizontal bands, each labeled with a row number (10, 20, 30, 40) on the left side. Each band contains 10 columns of symbols, with the columns labeled 80, 90, 100, 110, and 120 at the top. The symbols are a mix of letters (a, b, m, x), numbers (1, 4, 7), and various geometric and floral patterns. A black arrow points to the top of the 100 column.

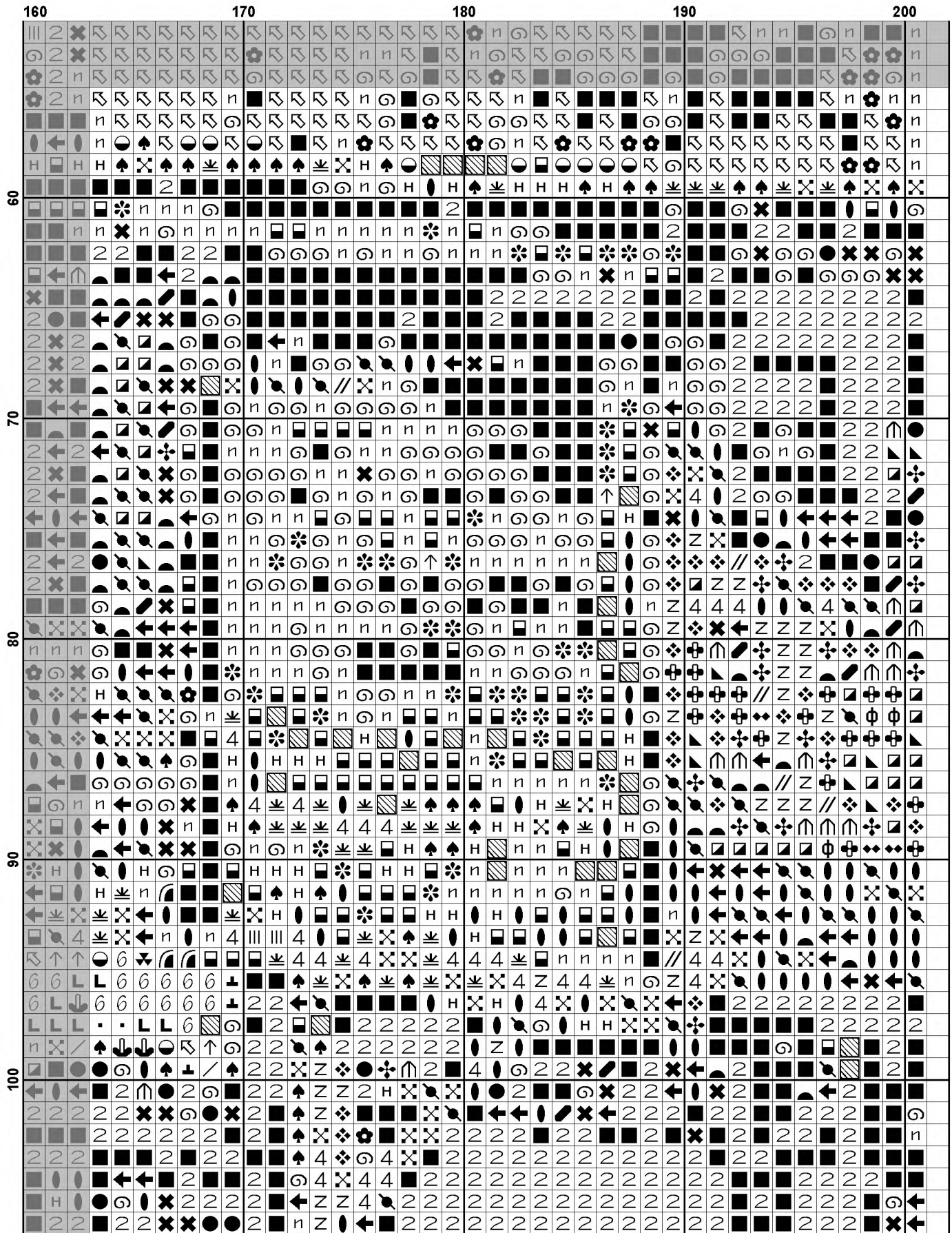
	160	170	180	190	200
10	⊗	⊗	⊗	⊗	⊗
20	⊗	⊗	⊗	⊗	⊗
30	⊗	⊗	⊗	⊗	⊗
40	⊗	⊗	⊗	⊗	⊗
50	⊗	⊗	⊗	⊗	⊗



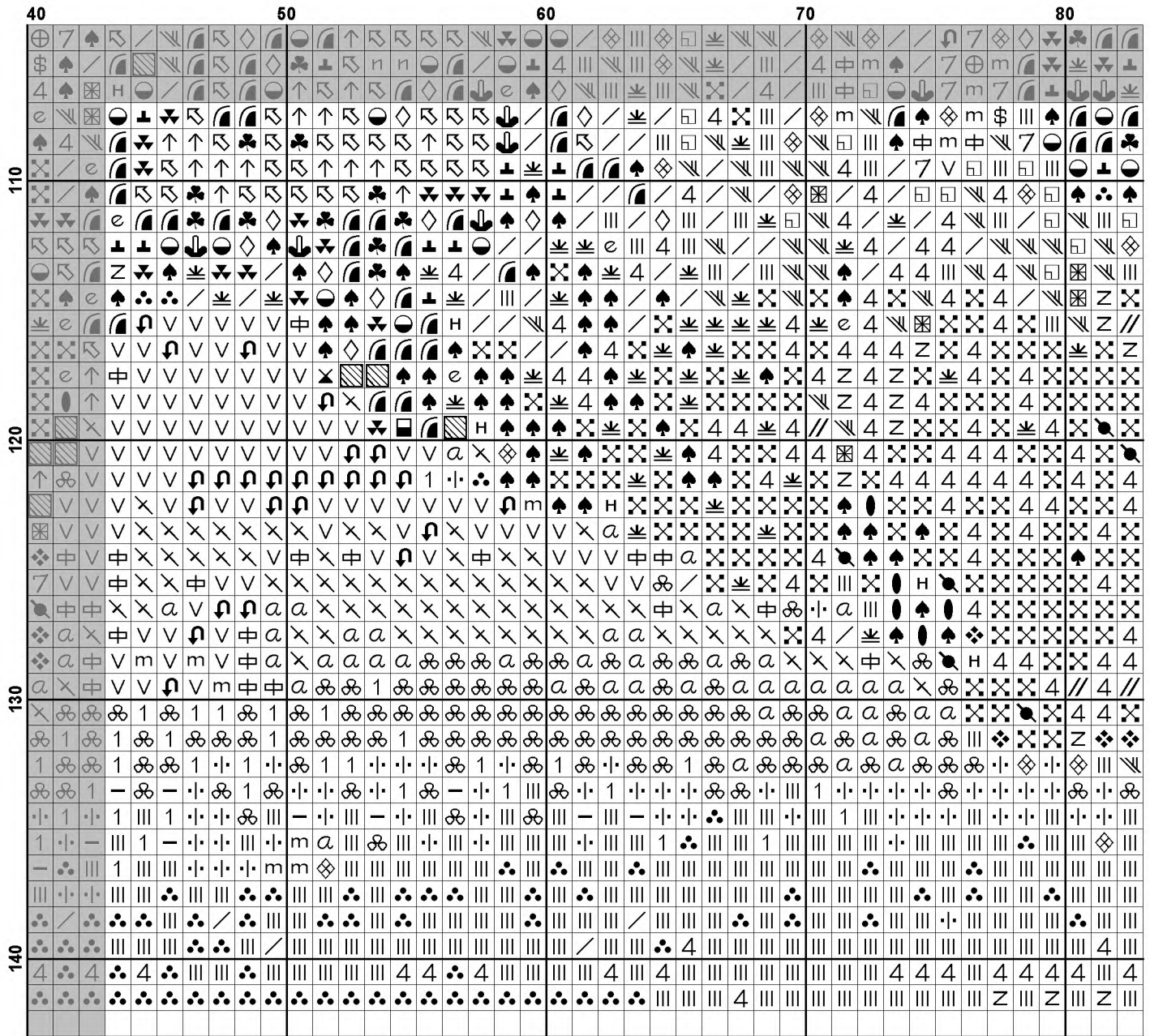


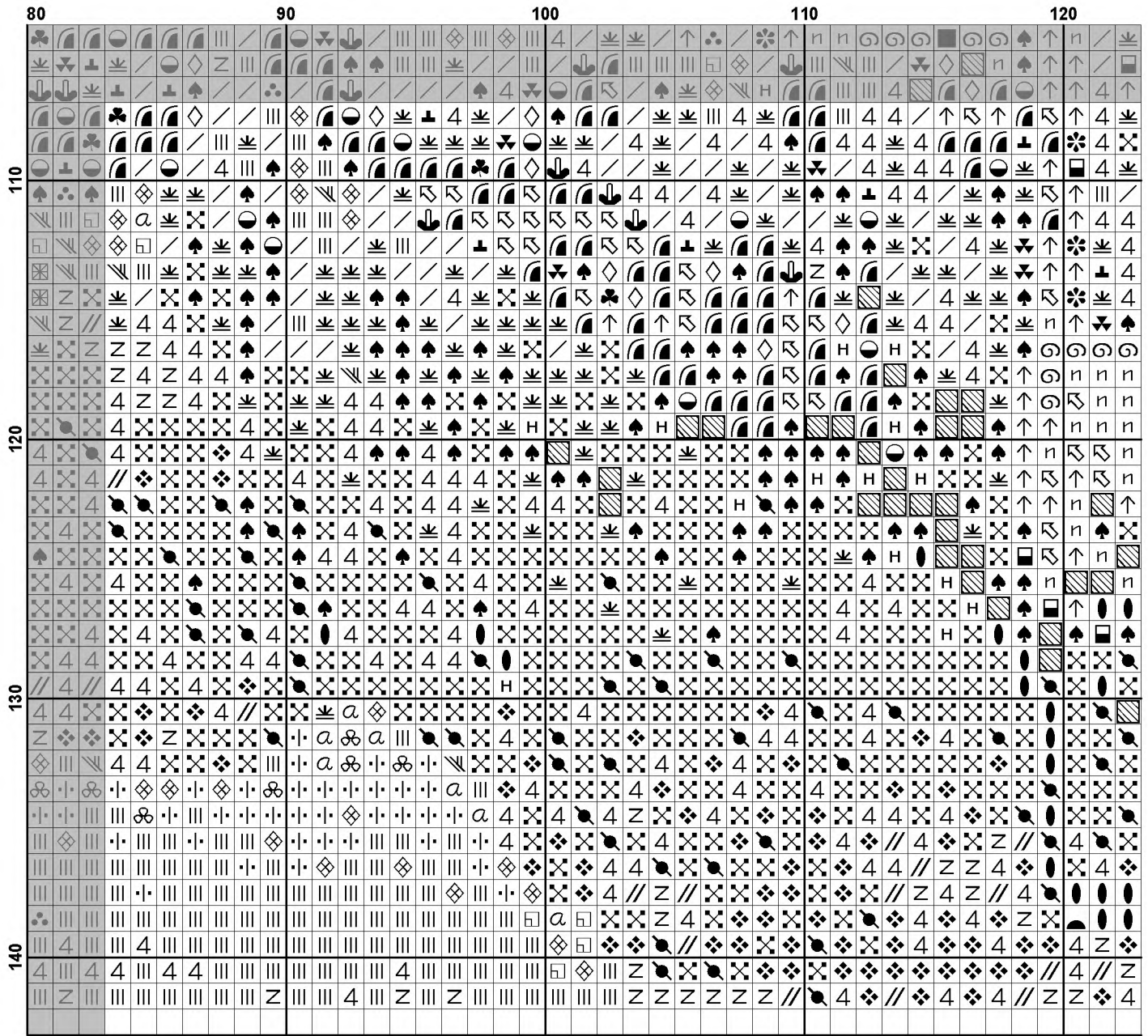


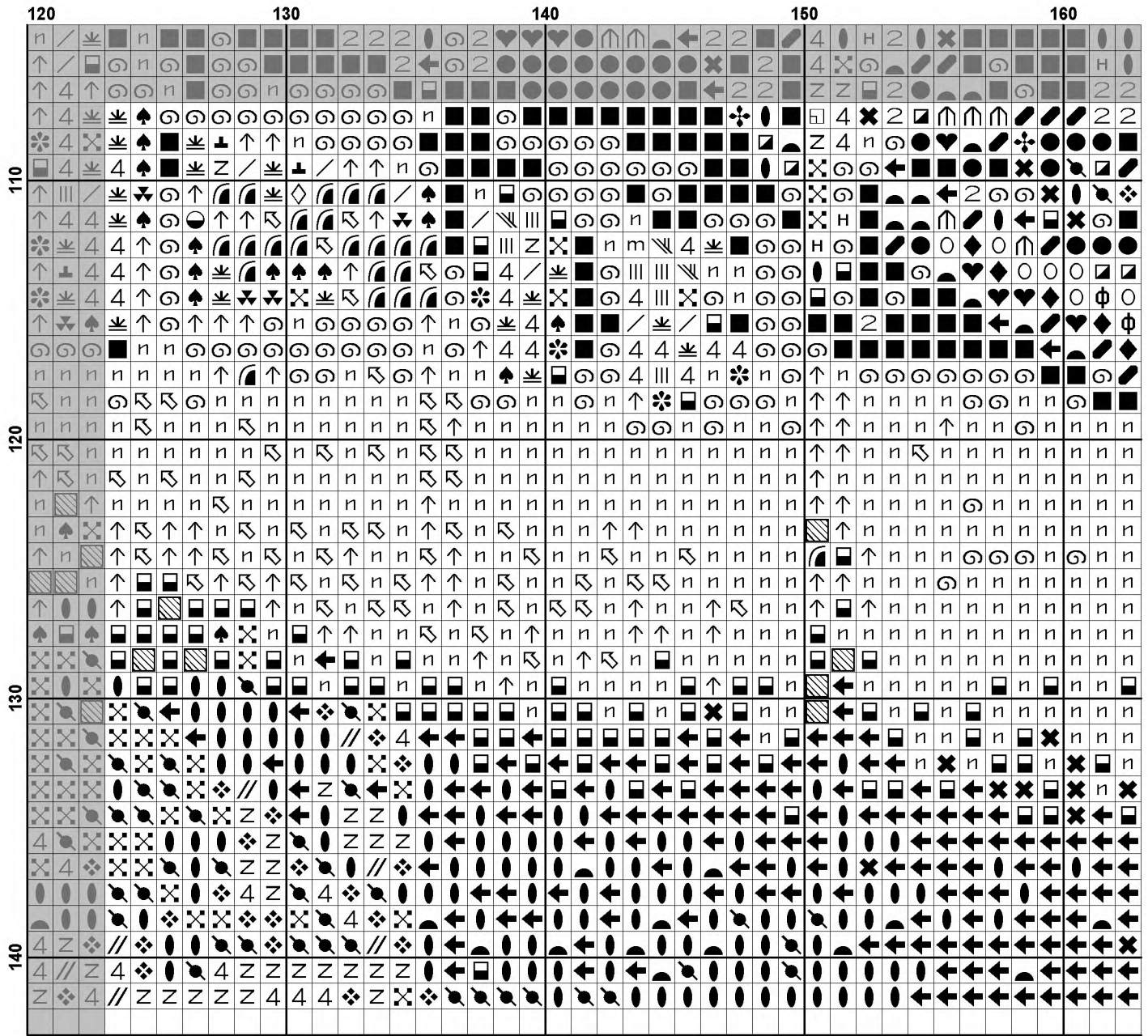


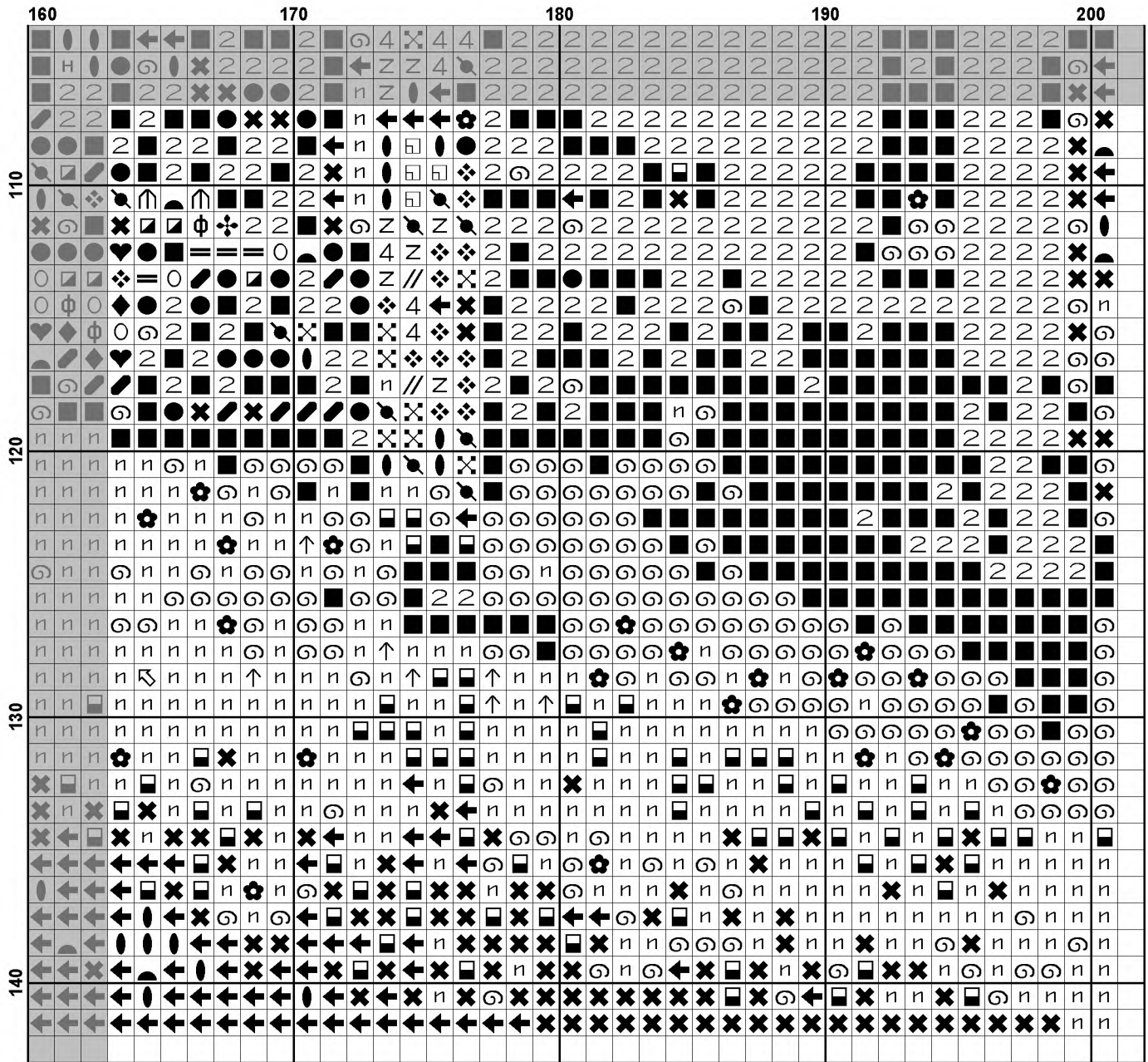


		10								20								30								40															
110		[Cross-stitch symbols for row 110]																																							
		[Cross-stitch symbols for row 111]																																							
		[Cross-stitch symbols for row 112]																																							
		[Cross-stitch symbols for row 113]																																							
		[Cross-stitch symbols for row 114]																																							
		[Cross-stitch symbols for row 115]																																							
120		[Cross-stitch symbols for row 120]																																							
		[Cross-stitch symbols for row 121]																																							
		[Cross-stitch symbols for row 122]																																							
		[Cross-stitch symbols for row 123]																																							
		[Cross-stitch symbols for row 124]																																							
		[Cross-stitch symbols for row 125]																																							
130		[Cross-stitch symbols for row 130]																																							
		[Cross-stitch symbols for row 131]																																							
		[Cross-stitch symbols for row 132]																																							
		[Cross-stitch symbols for row 133]																																							
		[Cross-stitch symbols for row 134]																																							
		[Cross-stitch symbols for row 135]																																							
140		[Cross-stitch symbols for row 140]																																							
		[Cross-stitch symbols for row 141]																																							
		[Cross-stitch symbols for row 142]																																							
		[Cross-stitch symbols for row 143]																																							
		[Cross-stitch symbols for row 144]																																							
		[Cross-stitch symbols for row 145]																																							












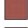





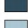



























Pattern Name: Mini Lago di Braies, Italy
Designed By: Photo by Samuele Errico Piccarini
Company: Artecy Cross Stitch
Copyright: Copyright Artecy Cross Stitch. All rights Reserved.
Fabric: Aida 14, White
 200w X 141h Stitches
Size(s): 14 Count, 14-1/4w X 10h in
 16 Count, 12-1/2w X 8-3/4h in
 18 Count, 11w X 7-3/4h in

Floss Used for Full Stitches:

Symbol	Strands	Type	Number	Color
	2	DMC	152	Shell Pink-MD LT
	2	DMC	156	Blue Violet-MD LT
	2	DMC	157	Cornflower Blue-VY LT
	2	DMC	159	Gray Blue-LT
	2	DMC	160	Gray Blue-MD
	2	DMC	161	Gray Blue
	2	DMC	162	Blue-UL VY LT
	2	DMC	168	Pewter-VY LT
	2	DMC	169	Pewter-LT
	2	DMC	223	Shell Pink-LT
	2	DMC	225	Shell Pink-UL VY LT
	2	DMC	310	Black
	2	DMC	311	Navy Blue-MD
	2	DMC	315	Antique Mauve-VY DK
	2	DMC	317	Pewter Gray
	2	DMC	318	Steel Gray-LT
	2	DMC	352	Coral-LT
	2	DMC	353	Peach
	2	DMC	413	Pewter Gray-DK
	2	DMC	453	Shell Gray-LT
	2	DMC	500	Blue Green-VY DK
	2	DMC	518	Wedgewood-LT
	2	DMC	519	Sky Blue
	2	DMC	597	Turquoise
	2	DMC	647	Beaver Gray-MD
	2	DMC	747	Sky Blue-VY LT
	2	DMC	760	Salmon
	2	DMC	762	Pearl Gray-VY LT
	2	DMC	775	Baby Blue-VY LT
	2	DMC	779	Cocoa-DK
	2	DMC	794	Cornflower Blue-LT
	2	DMC	799	Delft Blue-MD
	2	DMC	807	Peacock Blue
	2	DMC	809	Delft Blue
	2	DMC	813	Blue-LT
	2	DMC	814	Garnet-DK
	2	DMC	815	Garnet-MD
	2	DMC	823	Navy Blue-DK
	2	DMC	826	Blue-MD
	2	DMC	827	Blue-VY LT
	2	DMC	930	Antique Blue-DK
	2	DMC	931	Antique Blue-MD
	2	DMC	932	Antique Blue-LT
	2	DMC	939	Navy Blue-VY DK
	2	DMC	951	Tawny-LT

Symbol	Strands	Type	Number	Color
	2	DMC	958	Sea Green-DK
	2	DMC	959	Sea Green-MD
	2	DMC	3041	Antique Violet-MD
	2	DMC	3042	Antique Violet-LT
	2	DMC	3325	Baby Blue-LT
	2	DMC	3328	Salmon-DK
	2	DMC	3371	Black Brown
	2	DMC	3721	Shell Pink-DK
	2	DMC	3726	Antique Mauve-DK
	2	DMC	3727	Antique Mauve-LT
	2	DMC	3740	Antique Violet-DK
	2	DMC	3743	Antique Violet-VY LT
	2	DMC	3747	Blue Violet-VY LT
	2	DMC	3750	Antique Blue-VY DK
	2	DMC	3752	Antique Blue-VY LT
	2	DMC	3755	Baby Blue
	2	DMC	3760	Wedgewood-MD
	2	DMC	3761	Sky Blue-LT
	2	DMC	3766	Peacock Blue-LT
	2	DMC	3768	Gray Green-DK
	2	DMC	3770	Tawny-VY LT
	2	DMC	3778	Terra Cotta-LT
	2	DMC	3799	Pewter Gray-VY DK
	2	DMC	3807	Cornflower Blue
	2	DMC	3808	Turquoise-UL VY DK
	2	DMC	3809	Turquoise-VY DK
	2	DMC	3810	Turquoise-DK
	2	DMC	3812	Sea Green-VY DK
	2	DMC	3816	Celadon Green-MD
	2	DMC	3824	Apricot-LT
	2	DMC	3830	Terra Cotta-MD
	2	DMC	3840	Lavender Blue-LT
	2	DMC	3847	Teal Green-DK
	2	DMC	3848	Teal Green-MD
	2	DMC	3860	Cocoa
	2	DMC	3861	Cocoa-LT
	2	DMC	3865	Winter White

Notes:

The middle of this pattern can be found on page 8 and is 101 stitches across and 72 stitches down.

Pattern layout using page numbers in top left.

```

1  2  3  4  5
6  7  8  9 10
11 12 13 14 15

```

Usage Summary

Strands Per Skein: 6

Skein Length: 313.0 in

Type	Number	Full	Half	Quarter	Petite	Back(in)	Str(in)	Spec(in)	French	Bead	Skein Est.
DMC 152	152	123	0	0	0	0.0	0.0	0.0	0	0	1.000
DMC 156	156	112	0	0	0	0.0	0.0	0.0	0	0	1.000
DMC 157	157	335	0	0	0	0.0	0.0	0.0	0	0	1.000
DMC 159	159	931	0	0	0	0.0	0.0	0.0	0	0	1.000
DMC 160	160	631	0	0	0	0.0	0.0	0.0	0	0	1.000
DMC 161	161	326	0	0	0	0.0	0.0	0.0	0	0	1.000
DMC 162	162	503	0	0	0	0.0	0.0	0.0	0	0	1.000
DMC 168	168	209	0	0	0	0.0	0.0	0.0	0	0	1.000
DMC 169	169	841	0	0	0	0.0	0.0	0.0	0	0	1.000
DMC 223	223	78	0	0	0	0.0	0.0	0.0	0	0	1.000
DMC 225	225	158	0	0	0	0.0	0.0	0.0	0	0	1.000
DMC 310	310	624	0	0	0	0.0	0.0	0.0	0	0	1.000
DMC 311	311	125	0	0	0	0.0	0.0	0.0	0	0	1.000
DMC 315	315	42	0	0	0	0.0	0.0	0.0	0	0	1.000
DMC 317	317	621	0	0	0	0.0	0.0	0.0	0	0	1.000
DMC 318	318	741	0	0	0	0.0	0.0	0.0	0	0	1.000
DMC 352	352	80	0	0	0	0.0	0.0	0.0	0	0	1.000
DMC 353	353	110	0	0	0	0.0	0.0	0.0	0	0	1.000
DMC 413	413	456	0	0	0	0.0	0.0	0.0	0	0	1.000
DMC 453	453	109	0	0	0	0.0	0.0	0.0	0	0	1.000
DMC 500	500	239	0	0	0	0.0	0.0	0.0	0	0	1.000
DMC 518	518	171	0	0	0	0.0	0.0	0.0	0	0	1.000
DMC 519	519	767	0	0	0	0.0	0.0	0.0	0	0	1.000
DMC 597	597	135	0	0	0	0.0	0.0	0.0	0	0	1.000
DMC 647	647	56	0	0	0	0.0	0.0	0.0	0	0	1.000
DMC 747	747	191	0	0	0	0.0	0.0	0.0	0	0	1.000
DMC 760	760	34	0	0	0	0.0	0.0	0.0	0	0	1.000
DMC 762	762	486	0	0	0	0.0	0.0	0.0	0	0	1.000
DMC 775	775	645	0	0	0	0.0	0.0	0.0	0	0	1.000
DMC 779	779	69	0	0	0	0.0	0.0	0.0	0	0	1.000
DMC 794	794	187	0	0	0	0.0	0.0	0.0	0	0	1.000
DMC 799	799	443	0	0	0	0.0	0.0	0.0	0	0	1.000
DMC 807	807	87	0	0	0	0.0	0.0	0.0	0	0	1.000
DMC 809	809	24	0	0	0	0.0	0.0	0.0	0	0	1.000
DMC 813	813	572	0	0	0	0.0	0.0	0.0	0	0	1.000
DMC 814	814	27	0	0	0	0.0	0.0	0.0	0	0	1.000
DMC 815	815	20	0	0	0	0.0	0.0	0.0	0	0	1.000
DMC 823	823	1283	0	0	0	0.0	0.0	0.0	0	0	1.000
DMC 826	826	174	0	0	0	0.0	0.0	0.0	0	0	1.000
DMC 827	827	703	0	0	0	0.0	0.0	0.0	0	0	1.000
DMC 930	930	577	0	0	0	0.0	0.0	0.0	0	0	1.000
DMC 931	931	445	0	0	0	0.0	0.0	0.0	0	0	1.000
DMC 932	932	287	0	0	0	0.0	0.0	0.0	0	0	1.000
DMC 939	939	1807	0	0	0	0.0	0.0	0.0	0	0	2.000
DMC 951	951	122	0	0	0	0.0	0.0	0.0	0	0	1.000
DMC 958	958	24	0	0	0	0.0	0.0	0.0	0	0	1.000
DMC 959	959	22	0	0	0	0.0	0.0	0.0	0	0	1.000
DMC 3041	3041	398	0	0	0	0.0	0.0	0.0	0	0	1.000
DMC 3042	3042	409	0	0	0	0.0	0.0	0.0	0	0	1.000
DMC 3325	3325	376	0	0	0	0.0	0.0	0.0	0	0	1.000
DMC 3328	3328	25	0	0	0	0.0	0.0	0.0	0	0	1.000

Type	Number	Full	Half	Quarter	Petite	Back(in)	Str(in)	Spec(in)	French	Bead	Skein Est.
DMC	3371	125	0	0	0	0.0	0.0	0.0	0	0	1.000
DMC	3721	29	0	0	0	0.0	0.0	0.0	0	0	1.000
DMC	3726	83	0	0	0	0.0	0.0	0.0	0	0	1.000
DMC	3727	70	0	0	0	0.0	0.0	0.0	0	0	1.000
DMC	3740	143	0	0	0	0.0	0.0	0.0	0	0	1.000
DMC	3743	645	0	0	0	0.0	0.0	0.0	0	0	1.000
DMC	3747	792	0	0	0	0.0	0.0	0.0	0	0	1.000
DMC	3750	1728	0	0	0	0.0	0.0	0.0	0	0	1.000
DMC	3752	140	0	0	0	0.0	0.0	0.0	0	0	1.000
DMC	3755	204	0	0	0	0.0	0.0	0.0	0	0	1.000
DMC	3760	133	0	0	0	0.0	0.0	0.0	0	0	1.000
DMC	3761	124	0	0	0	0.0	0.0	0.0	0	0	1.000
DMC	3766	72	0	0	0	0.0	0.0	0.0	0	0	1.000
DMC	3768	269	0	0	0	0.0	0.0	0.0	0	0	1.000
DMC	3770	143	0	0	0	0.0	0.0	0.0	0	0	1.000
DMC	3778	75	0	0	0	0.0	0.0	0.0	0	0	1.000
DMC	3799	263	0	0	0	0.0	0.0	0.0	0	0	1.000
DMC	3807	20	0	0	0	0.0	0.0	0.0	0	0	1.000
DMC	3808	591	0	0	0	0.0	0.0	0.0	0	0	1.000
DMC	3809	613	0	0	0	0.0	0.0	0.0	0	0	1.000
DMC	3810	151	0	0	0	0.0	0.0	0.0	0	0	1.000
DMC	3812	223	0	0	0	0.0	0.0	0.0	0	0	1.000
DMC	3816	35	0	0	0	0.0	0.0	0.0	0	0	1.000
DMC	3824	83	0	0	0	0.0	0.0	0.0	0	0	1.000
DMC	3830	29	0	0	0	0.0	0.0	0.0	0	0	1.000
DMC	3840	138	0	0	0	0.0	0.0	0.0	0	0	1.000
DMC	3847	1408	0	0	0	0.0	0.0	0.0	0	0	1.000
DMC	3848	213	0	0	0	0.0	0.0	0.0	0	0	1.000
DMC	3860	69	0	0	0	0.0	0.0	0.0	0	0	1.000
DMC	3861	279	0	0	0	0.0	0.0	0.0	0	0	1.000
DMC	3865	1350	0	0	0	0.0	0.0	0.0	0	0	1.000